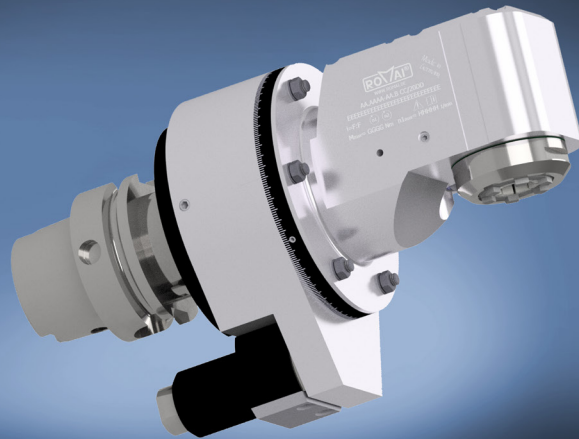


LIGHTWEIGHT

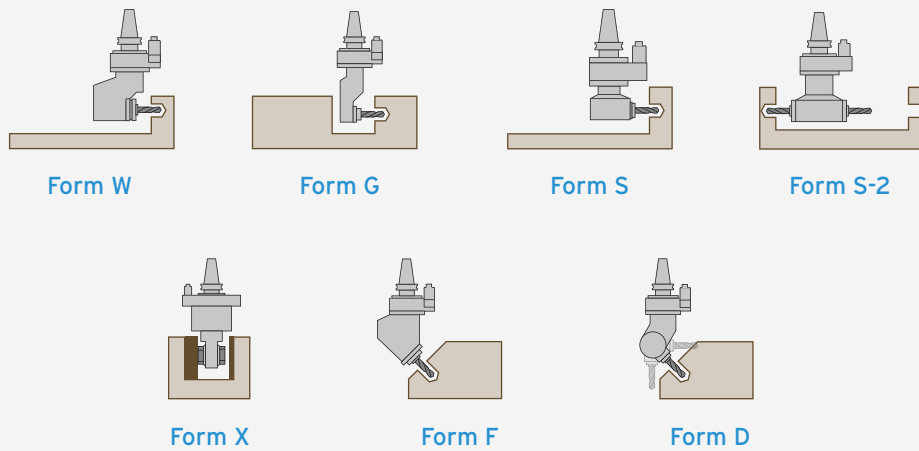


High-performance machining even in confined spaces

With our super slim Compact Line angular heads you can also master particularly narrow fields of operation.

- 30% more compact and lighter than the previous standard series with the same performance data
- High-pressure coolant supply with up to 100 bar for internal and external cooling
- Friction-optimised seals for higher speeds
- Ideal for demanding machining in confined spaces and machines with low tool change data

All versions now even more compact



Transmission gears in all dimensions



Further product groups



ROMAI Robert Maier GmbH

Florianstraße 22
71665 Vaihingen/Enz-Horrheim
Deutschland

Tel.: +49 70 42 / 83 21 - 0
Fax: +49 70 42 / 83 21 - 22
E-Mail: info@romai.de

www.romai.de